



## Pavasario Taurė (Spring Cup) 2015

WRE event MW 21E

25.04.2015.- 26.04.2015.

## Bulletin 3 (2015 April 17)



### Event organization:

TSMK "Raidas"  
Event director: Dovile Lažinskienė  
Courses: Rimvydas Kutka



### Event controlling:

IOF Event Adviser: Rimas Jovaišas  
Juri: Antanas Paužas, Rimantas Serva, Devis Žilovas



### Contacts:

Rimvydas Kutka +37068544037  
[tukmir@gmail.com](mailto:tukmir@gmail.com)



### Programme:

2015.04.25. Middle distance (WRE). Start 14:00  
2015.04.26. Long distance. Start 12:00



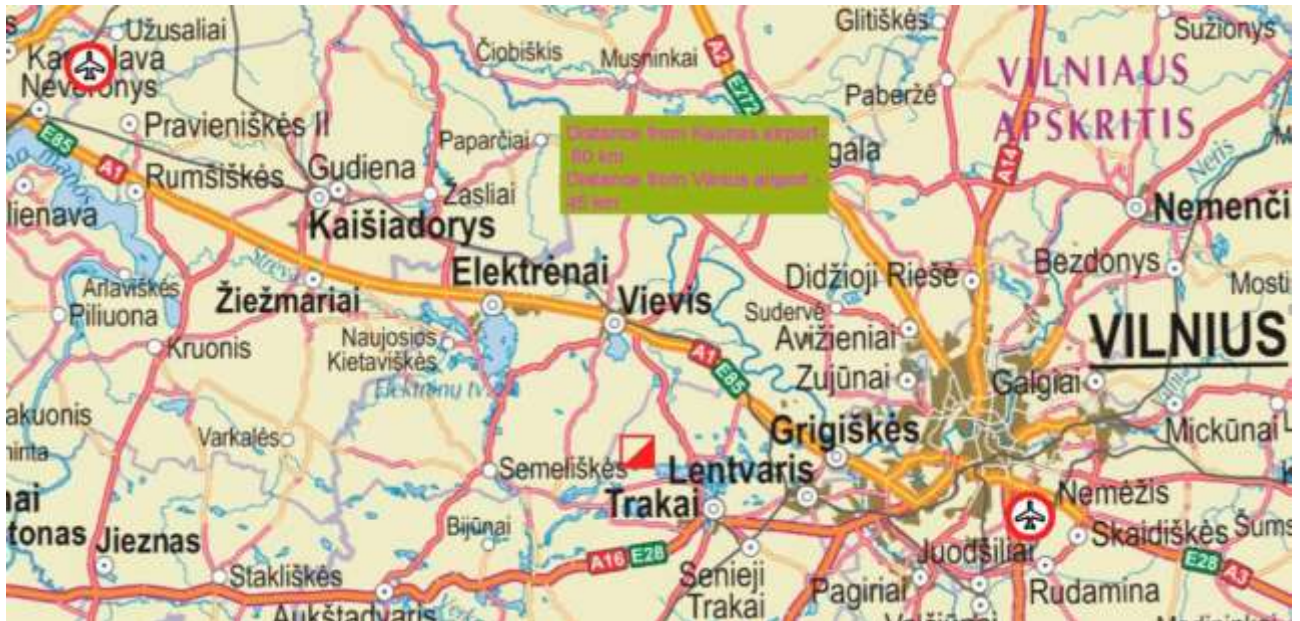
## Competition classes:

WM 12, 14, 16, 18, 20, **21E (WRE)**,  
21A, 21B, 35, 40, 45, 50, 55, 60, 65, 70, 75, 80

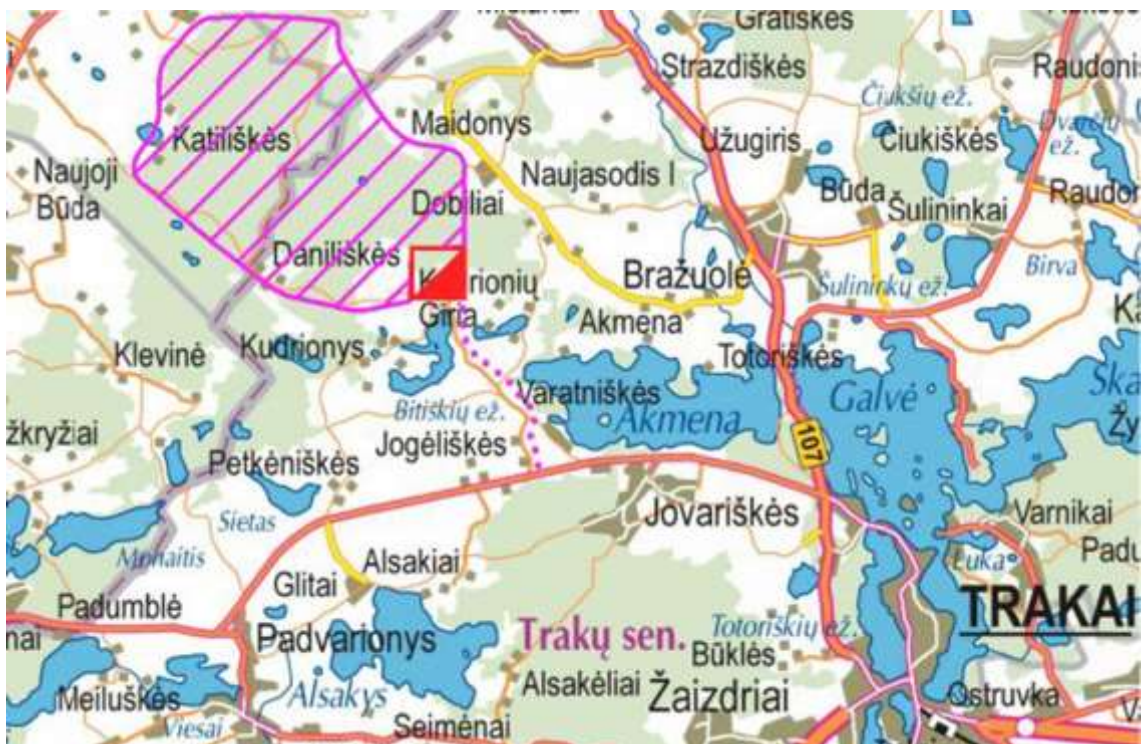


## Venues- Getting there:

Kudrionių poilsio kompleksas, Trakų rajonas ( 8 km from Trakai center).



## Event center / Forbidden area:







## Terrain / Maps:

1-st day 2015.04.25( WRE) – Middle distance.

Scale 1:10 000 , contours 2,5 m.

MW 12, MW 65+ scale 1:7500, contours 2,5 m.

Map is made late 2014 and spring 2015 using LIDAR data.

Land surface forms are medium and small. There are depressions and hills of various sizes, some of them have very steep slopes. Biggest slopes are up to 25 meters. A lot of uncrossable marshes, mostly made by beavers. Only few roads and paths. Runnability is middle level.

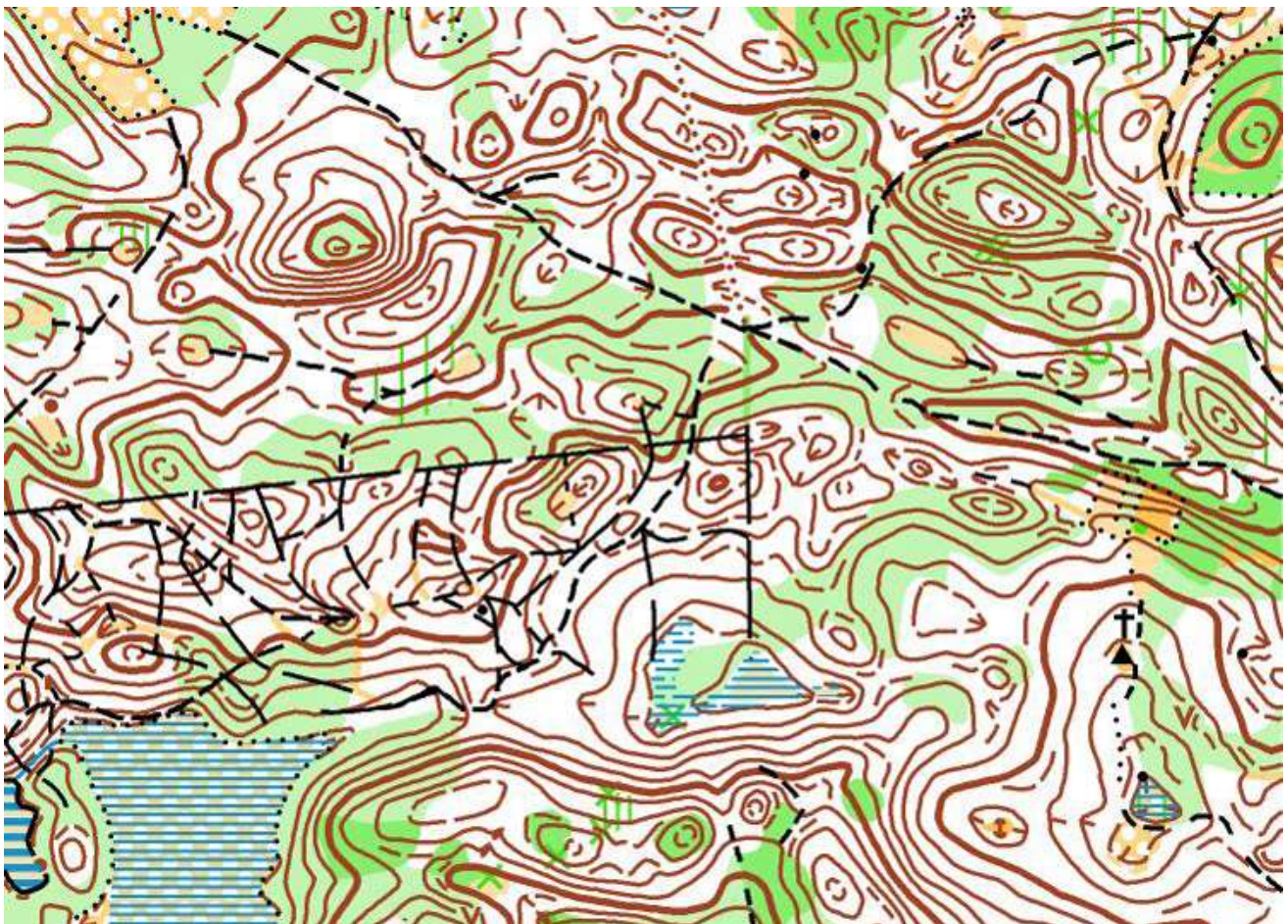
Terrain was never used for orienteering before.

Start interval 2 min. Distance from CC to start – 1,0 km.

There would be model map available in competition centre.

Only MW21E runners will run with bibs.

Map example:





2-nd day long 2015.04.26

For classes M21E,A, 18,20,35,40, W21E,18,20:

Scale 1:15 000 , contours 5 m.

Start interval- 3 min

For classes M12, 75+, W 12,65+ Scale 1:7 500, contours 2,5m.

For other classes Scale 1:10 000, contours 2,5 m.

M21A - two sided maps: one side M1:10 000 2,5m, on other side m1:15 000 5 m. After competitions we want to get feedback from you which map you used more.

Distance from CC to start 1,4 km.

Map compiled from three maps: 1st day middle distance, 2014 Middle distance ( [Daniliskes](#) ) and ( [Rusakalnis](#) )

Revised in spring 2015 using LIDAR data.

Map example long: Scale 1:15 000 , contours 5 m.





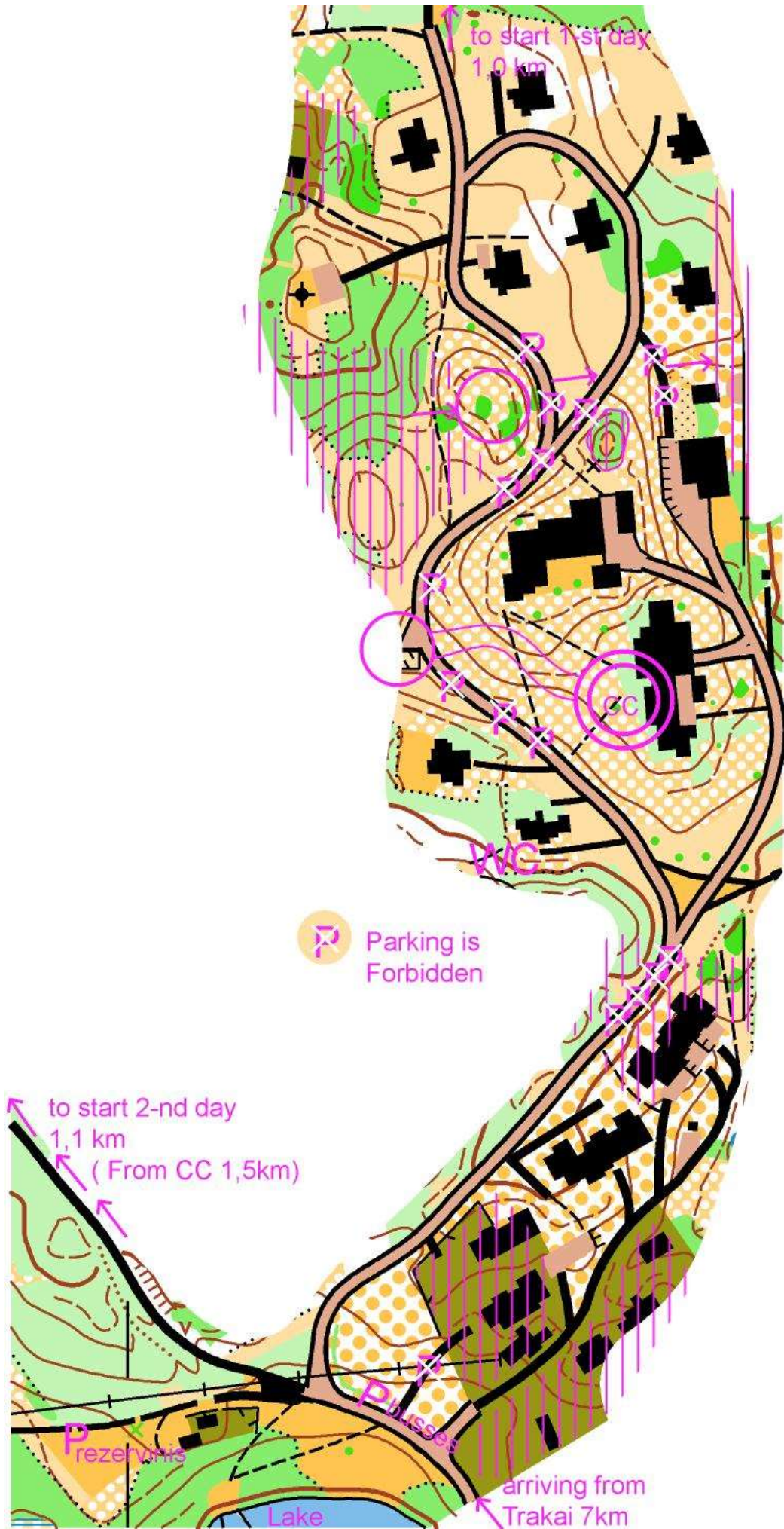
## Courses:

1-st day					
Class	Length km	Controls	Class	Length km	Controls
M12	2,2	7	W12	2,2	7
M14	2,6	12	W14	2,5	12
M16	3,6	15	W16	3	14
M18	5,1	19	W18	4,7	20
M20	5,1	19	W20	4,7	20
M21A	5,2	21	W21A	3,6	15
M21B	3,6	15	W21B	3	14
M21E	6,6	26	W21E	5,3	23
M35	6,1	24	W35	4,8	22
M40	6,1	24	W40	4,8	22
M45	5,2	21	W45	3,6	15
M50	5,2	21	W50	3,6	15
M55	5	19	W55	3,1	16
M60	5	19	W60	3,1	16
M65	3,1	16	W65	2,8	16
M70	3,1	16	W70	2,8	16
M75	2,8	16	W75	2,4	11
M80	2,4	11	W80	2,2	7
2-nd day					
Class	Length km	Controls	Class	Length km	Controls
M12	2,3	11	W12	2,3	11
M14	2,9	13	W14	2,6	11
M16	4,9	15	W16	3,8	12
M18	9,3	15	W18	6,6	15
M20	9,3	15	W20	6,6	15
M21A	9,3	16	W21A	5,9	15
M21B	4,9	15	W21B	3,8	12
M21E	13,5	24	W21E	9,7	17
M35	10,2	17	W35	7,2	17
M40	10,2	17	W40	7,2	17
M45	9,3	16	W45	5,9	15
M50	9,3	16	W50	5,9	15
M55	6,9	16	W55	4,9	12
M60	6,9	16	W60	4,9	12
M65	4,9	12	W65	3,2	10
M70	4,9	12	W70	3,2	10
M75	3,2	10	W75	2,9	14
M80	2,9	14	W80	2,3	11



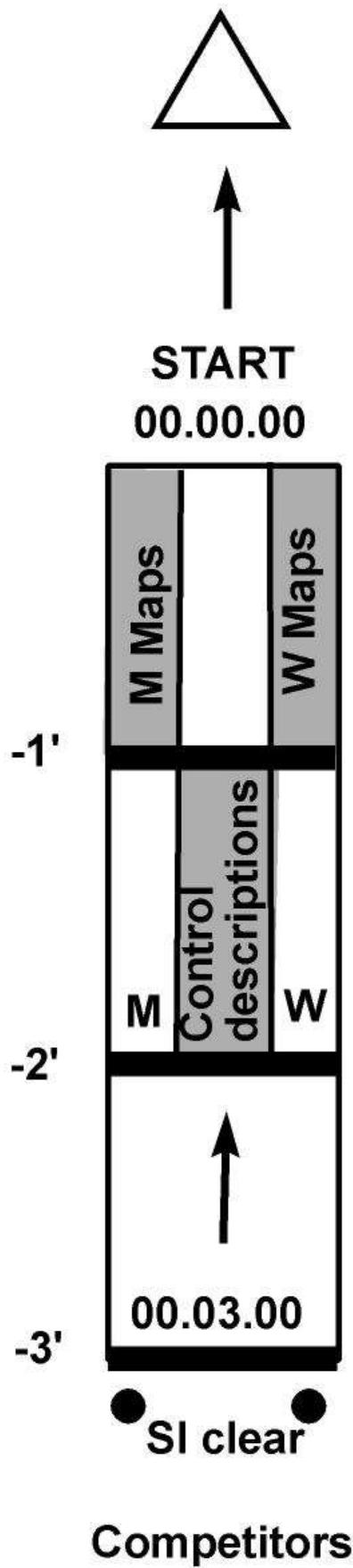


# Competition Center





Start Scheme:





## Model Map:

Model map will be available by the way to the 1-st day start.

▷	S				
111		○ ○		≡	
112		∩			
113		∩			
114		○			
115		∩	⊙		
116		○	⊙		
117		○	∩		
118		∩		∩	

**WRE**

**MODEL** M 1:10000  
E = 2,5M

R. PAKNIO LEIDYKLA



## GPS Tracking:

GPS trackers will be given to 14 ( M21E) and 6 (W21E) highest ranked athletes according to World Ranking.



## Entries:

Classes MW21E. Enter to the WRE via [IOF Eventor](#).

Price in IOF eventor is only for 1 day(WRE).

Entries for all 2 days must be done additional on LOSF entry system on [DB Topas](#) website.

Deadline for the entries is Monday, 13<sup>th</sup> April 2015. After 13<sup>th</sup> April only vacant places will

be available, though entry fee will be double( of regular price).





## Entry Fees:

		1-100	150217	150330	150413	Extra fee**	SI rent
		Entries*	reduced price	Regular price	Late		for 1 day
MV21E	€	14	18	20	24	3	1
MW21-60	€	12	16	18	20	2	1
MW20,65+	€	10	12	14	16	2	1
MW14-18	€	8	8	12	14	1	0,5
MV 12	€	6	6	10	12	1	0,5

\* For the registered 1-100 competitors overall classes according to [DBTopas](#)

\*\* entry fee for one day - half price plus extra fee



## Payments:

All international runners groups of 6 people or more should pay entry fee by bank transfer till 20 th of April. Smaller groups or individual runners may as well pay cash on arriving in EC.

Registration cancellation is accepted until 13.04.2015 through [DB Topas](#) website.

**Beneficiary:** Turizmo ir sporto mėgėjų klubas "RAIDAS".

Address: Dvareliškių g. 11, Šlienava, LT-53146 Kauno r.

**Bank name:** Swedbank

**SWIFT:** HABALT22

**IBAN:** LT037300010093769999

**Note:** All bank transfers fees must be covered by payer.



## Additional competitions:

[Trail - O 25/26.04.2015](#)



## Punching System:

SPORTident system will be used. All participants that do not have SI cards may rent it in the event centre.



## Prizes:

**3 best runners in all classes will receive prizes in overall ranking.**

MW21E: Money Prizes in overall ranking:

1st place –€ 300, 2 nd place – € 200, 3 rd place - € 100.



## Special Notes:

Competitors take part on their own risk and responsibility.  
There will be no risk or insurance covered by organizers.



## Accommodation/ visas:

Accommodation in Trakai district:

<http://www.trakai-visit.lt/en/accommodation>

<http://www.atostogoskaime.lt/lt/kaimo-turizmas/traku-rajone>

List of countries citizens of which may enter Lithuania without a visa as well as information on how a visa can be obtained can be found on the following website:

<http://www.migracija.lt/index.php?1015128441>



## Sightseeing and cultural attractions:

Trakai is included as candidate to World Heritage list.

<http://www.trakai-visit.lt/en/trakai>

<http://whc.unesco.org/en/tentativelists/1821/>



## Training:

There are good training possibilities in a nearby areas, similar terrains.

Competitors who are interested in coming earlier may contact organizers for training maps and accommodation recommendation.





**Sponsors:**



**SUPERLOTO**



**UAB DIAGNOSTINĖS SISTEMOS**  
Kalvarijų sodų 1-oji g. 2, LT-08315 Vilnius

R. PAKNIO  LEIDYKLA



**Don't forget to entry these WRE events:**





Partners:

